

## TECHNICAL DATA SHEET

### Friiva™ gate & fence flood protection barrier, NF 35 LT, NF 35, NF 100

Dimension and weight:

TECHNICAL DATA	NF 35 LT	NF 35	NF 100
Panel / Log / Beam			
Panel Height	200 mm	200 mm	200 mm
Panel Thickness	35 mm	35 mm	100 mm
Panel material gauge	1.6 mm	2.5 mm	3.0 mm
Panel weight per M	2.6 kg	3.7 kg	5.9 kg
Max protection height	600 mm	1,200 mm	4,600 mm
Max length (width)*	3,500 mm	6,000 mm	6,000 mm
Material			
Panels,	Aluminum		
Post and extension poles	Aluminum		
Press down tools	SUS 304		
Bottom seals	PU/PE		
Panel & Post seals	Ethylene Propylene Diene Monomer Rubber (EPDM)		
*Depending on protection height demountable extension poles can be used.			

AS Friis Ltd.

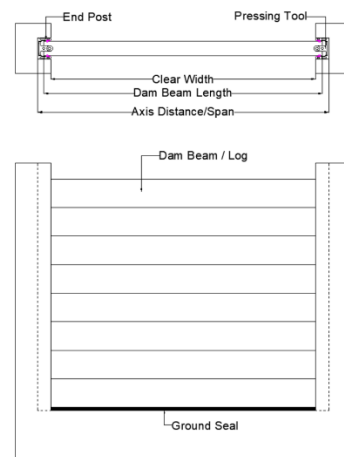
34/11 Phatthana Wet 8, Sukumvit Soi 71, Khwaeng Phra Khanong Nuea, Watthana, Bangkok 10110, TH  
 Tel: +66 20 95 56 95 Fax: +66 20 95 56 90 email: [infor@as-friis.com](mailto:infor@as-friis.com) website: [www.as-friis.com](http://www.as-friis.com)

# TECHNICAL DATA SHEET

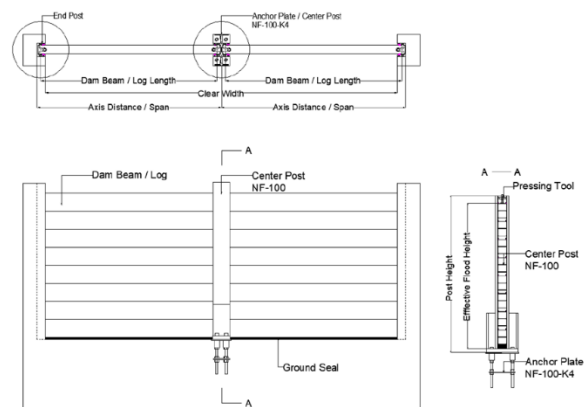
## Friiva™ gate & fence flood protection barrier

### NF 35 LT, NF 35, NF 100

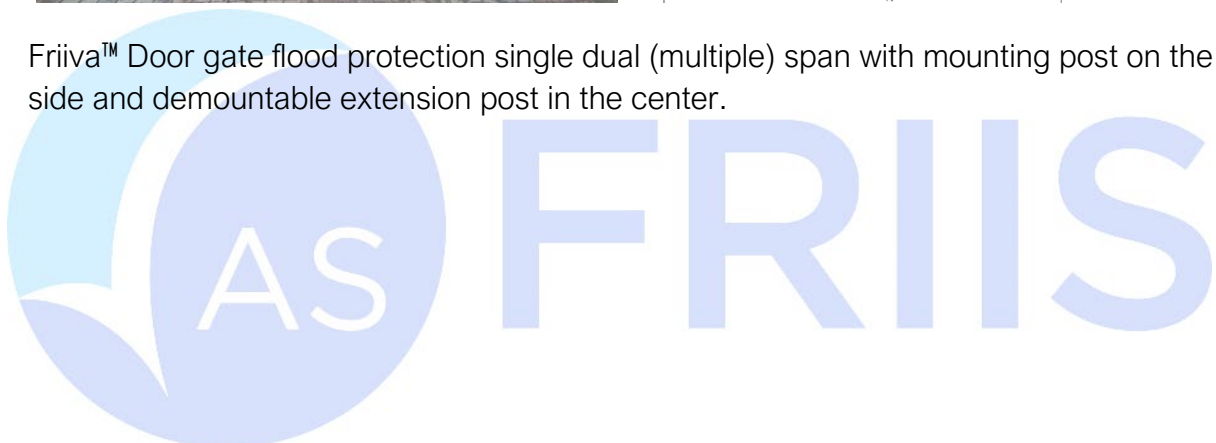
**Installation & Accessories:**



Friiva™ Door gate flood protection single span with mounting post on the side



Friiva™ Door gate flood protection single dual (multiple) span with mounting post on the side and demountable extension post in the center.

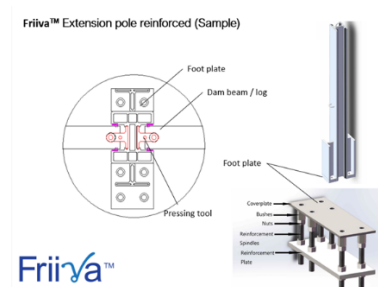
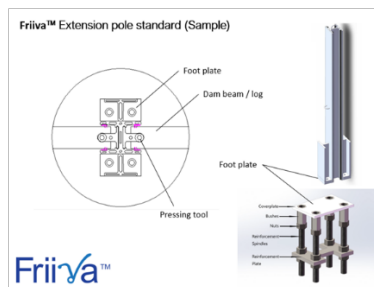
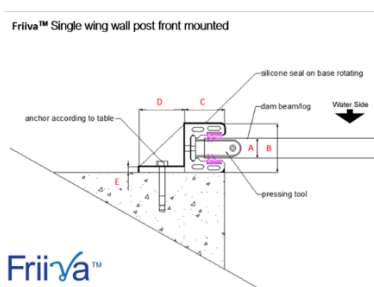
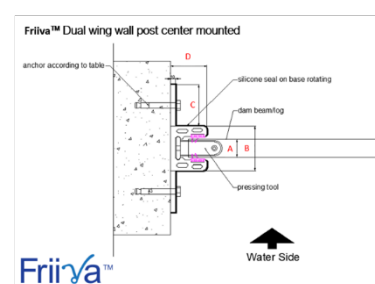
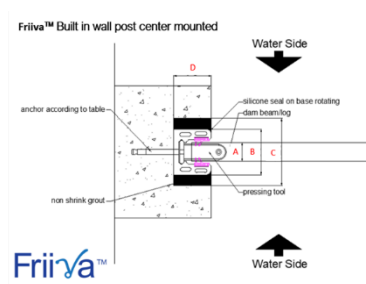
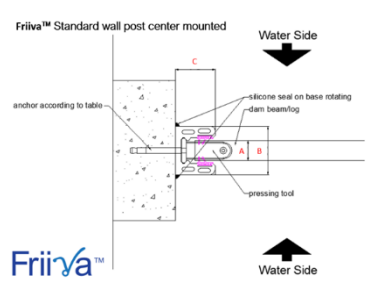


# TECHNICAL DATA SHEET

## Friiva™ gate & fence flood protection barrier

### NF 35 LT, NF 35, NF 100

Post and extension pole options:



AS Friis Ltd.